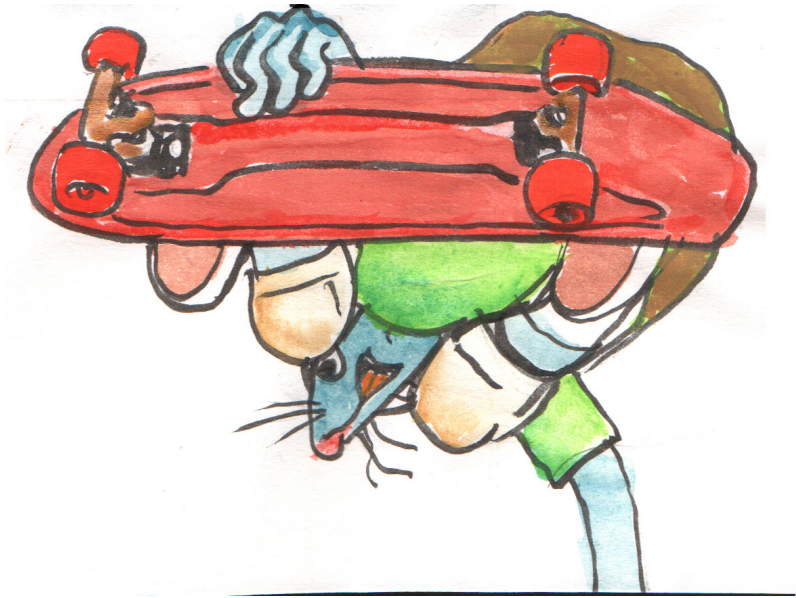


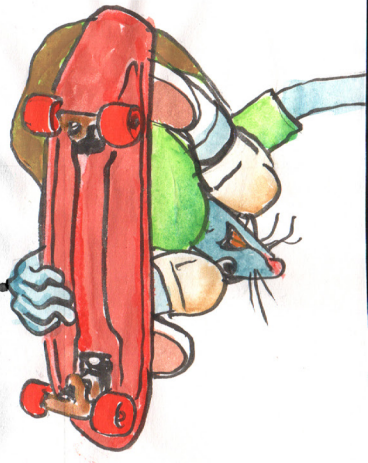
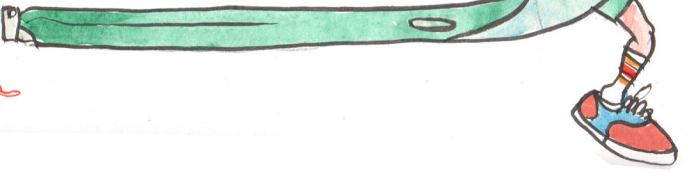
'zime 69



Find an old deck, not too splintered. **T**race your heritage shape-which will likely be smaller-and cut it out with a sabre saw, steak knife, or other implement of your choosing. **O**ne cool thing-it will already have grip-tape! **I**t was tempted to widen the tail-old boards had a strong surfboard influence resulting in a less functional tail. **M**aybe next version. **T**rasp and sandpaper will smooth your klobbles.



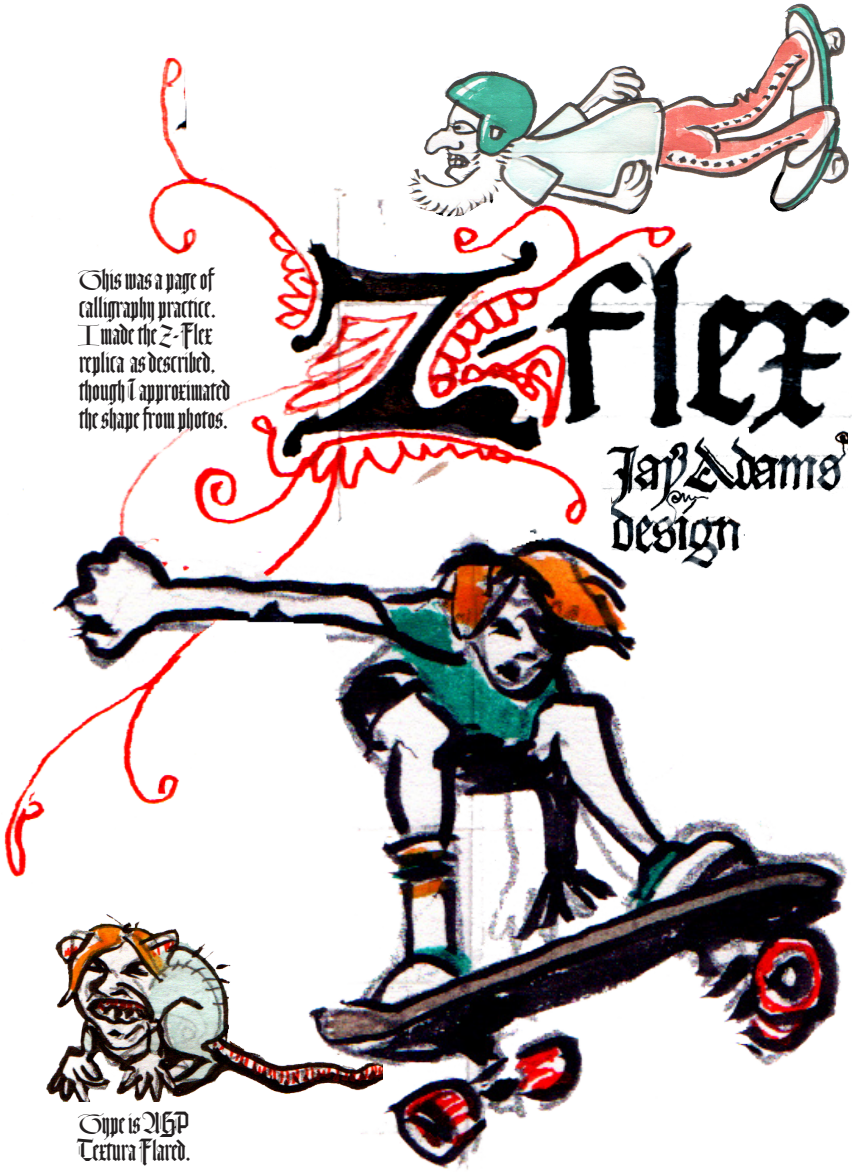
Alex Jay Adams design originally these were made of molded fiberglass. **I** can remember the splinters from a bashed nose and dragged tail. **C**ary visions of asbestos or those tiny glass shivers migrating through the body to lodge in vital organs. **W**hat has such a mythic time. **I** wonder how bad I could get on that old setup nola.



This was a page of calligraphy practice. I made the Z-Flex replica as described, though I approximated the shape from photos.

Zflex

Jay Adams
Design



Type is NHP
Textura Flared.